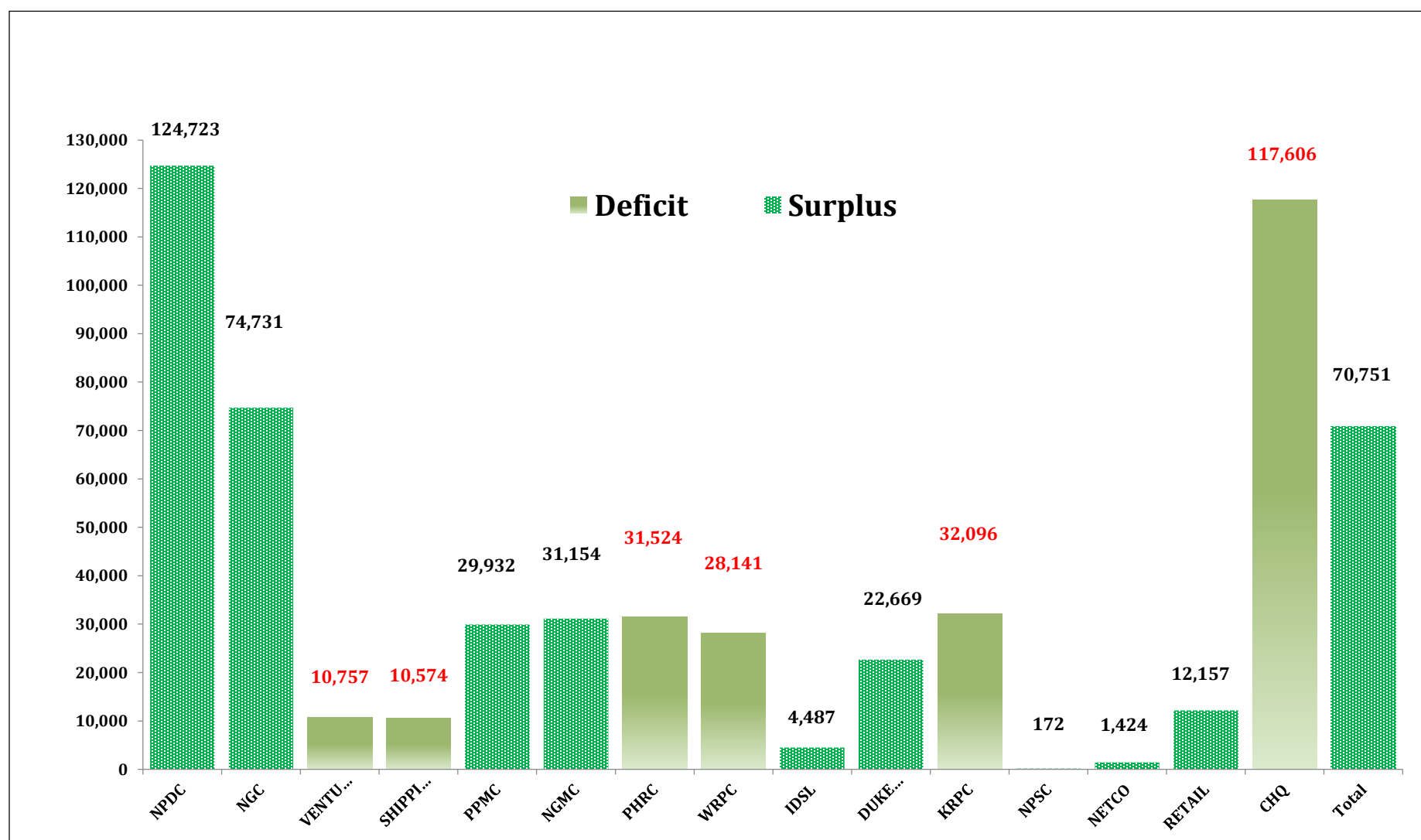


NNPC Monthly Oil & Gas Report: November, 2020



NNPC Group Financial Performance by Entity

SBU/CSU	MONTHLY BUDGET (=N= MILLION)			OCTOBER, 2020 (=N= MILLION)			NOVEMBER, 2020 (=N= MILLION)			PTD (=N= MILLION)					
	Revenue	Expense	Surplus/ (Deficit)	Revenue	Expense	Surplus/ (Deficit)	Revenue	Expense	Surplus/ (Deficit)	2020 BUDGET			2020 ACTUAL		
										Revenue	Expense	Surplus/ (Deficit)	Revenue	Expense	Surplus/ (Deficit)
NPDC	187,866	96,814	91,052	80,904	68,723	12,182	70,271	62,751	7,519	2,066,524	1,064,954	1,001,570	775,781	651,058	124,723
IDSL	3,455	2,310	1,145	2,423	1,067	1,357	2,835	1,221	1,614	38,010	25,415	12,596	18,306	13,819	4,487
NETCO	3,434	2,995	440	1,533	1,359	174	1,435	922	513	37,779	32,940	4,839	17,016	15,592	1,424
Sub-Total	194,756	102,119	92,637	84,861	71,149	13,712	74,541	64,895	9,646	2,142,313	1,123,309	1,019,005	811,103	680,469	130,634
NGC	11,016	1,947	9,070	10,234	7,202	3,031	10,583	1,470	9,113	121,181	21,414	99,766	96,611	21,880	74,731
NGMC	21,919	16,166	5,753	19,451	16,644	2,807	19,428	16,584	2,844	241,106	177,826	63,280	193,004	161,851	31,154
Sub-Total	32,935	18,113	14,822	29,685	23,846	5,839	30,011	18,054	11,957	362,287	199,240	163,047	289,616	183,731	105,885
KRPC	9	2,008	(1,999)	477	1,982	(1,505)	419	1,887	(1,468)	101	22,086	(21,985)	7,593	39,689	(32,096)
PHRC	13	2,515	(2,503)	1	2,029	(2,028)	8	2,102	(2,094)	138	27,666	(27,528)	72	31,596	(31,524)
WRPC	77	1,628	(1,551)	37	1,993	(1,956)	38	2,472	(2,433)	849	17,911	(17,063)	369	28,509	(28,141)
Sub-Total	99	6,151	(6,052)	514	6,004	(5,490)	465	6,460	(5,995)	1,087	67,664	(66,576)	8,034	99,794	(91,760)
RETAIL	29,064	27,709	1,355	17,991	16,568	1,423	22,146	20,708	1,438	319,706	304,799	14,907	170,260	158,103	12,157
PPMC	279,313	275,120	4,193	157,698	154,879	2,819	222,860	221,817	1,043	3,072,439	3,026,315	46,124	1,560,424	1,530,492	29,932
NPSC	5,559	5,596	(37)	6,931	6,456	475	3,530	3,422	108	61,146	61,556	(410)	49,139	48,967	172
SHIPPING	10,165	9,858	307	12,617	12,883	(265)	10,750	11,257	(507)	111,818	108,439	3,379	120,367	130,941	(10,574)
DUKE OIL	73,094	72,467	627	112,634	110,043	2,591	58,712	54,001	4,711	804,039	797,141	6,898	1,055,050	1,032,381	22,669
Sub-Total	397,195	390,750	6,445	307,871	300,828	7,043	317,998	311,205	6,793	4,369,148	4,298,250	70,898	2,955,239	2,900,883	54,356
CHQ	823	19,713	(18,890)	185	11,506	(11,321)	68	7,065	(6,996)	9,055	216,844	(207,789)	642	118,249	(117,606)
VENTURES	587	3,073	(2,486)	53	1,128	(1,075)	0	1,974	(1,974)	6,454	33,805	(27,351)	443	11,200	(10,757)
Sub-Total	1,410	22,786	(21,376)	238	12,634	(12,396)	68	9,039	(8,970)	15,509	250,649	(235,140)	1,085	129,449	(128,363)
Grand Total	626,395	539,919	86,476	423,169	414,461	8,709	423,083	409,653	13,430	6,890,344	5,939,111	951,233	4,065,076	3,994,326	70,751



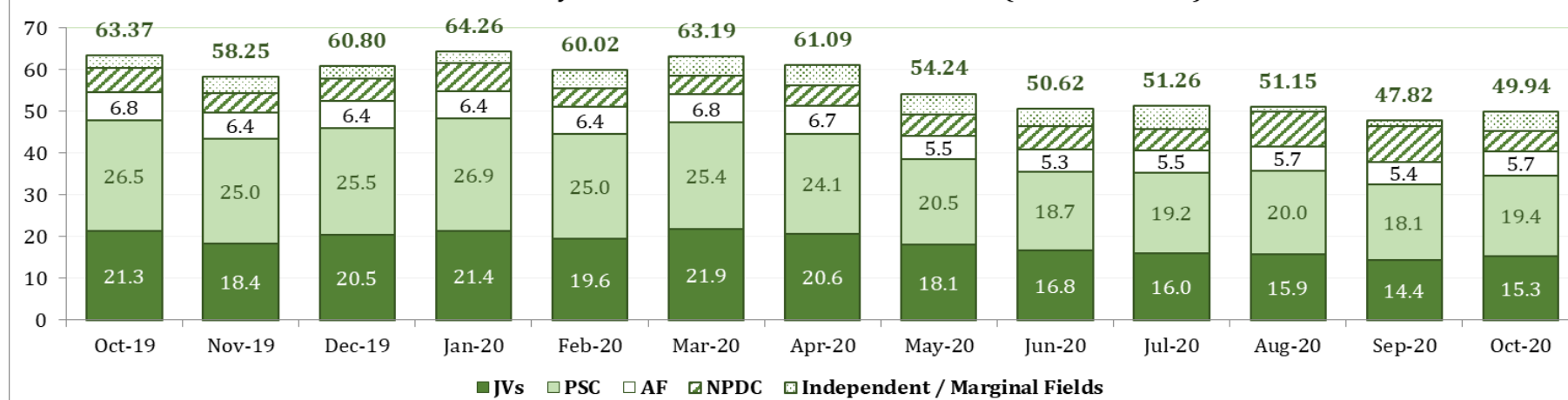


National Crude Oil & Condensate Production (Fiscalised) by Business Arrangement

Month	JVs	PSC	AF	NPDC	Independent / Marginal Fields	Total	Average Daily Production
	Barrels	Barrels	Barrels	Barrels	Barrels	Barrels	Barrels
Oct-19	21,266,847	26,519,528	6,761,513	5,878,606	2,947,843	63,374,338	2,044,333
Nov-19	18,402,011	24,970,450	6,387,164	4,638,276	3,851,588	58,249,489	1,941,650
Dec-19	20,501,440	25,507,750	6,420,300	5,509,484	2,863,809	60,802,783	1,961,380
Jan-20	21,407,353	26,943,371	6,388,285	6,827,648	2,693,737	64,260,394	2,072,916
Feb-20	19,563,126	24,994,553	6,445,960	4,512,437	4,504,573	60,020,649	2,069,678
Mar-20	21,901,436	25,404,808	6,765,485	4,594,710	4,523,944	63,190,383	2,038,399
Apr-20	20,575,026	24,091,959	6,681,456	4,957,641	4,780,105	61,086,187	2,036,206
May-20	18,106,980	20,513,448	5,526,253	5,093,266	5,003,806	54,243,753	1,749,798
Jun-20	16,805,111	18,688,133	5,336,469	5,728,836	4,063,552	50,622,101	1,687,403
Jul-20	16,020,162	19,207,680	5,536,653	4,914,838	5,576,863	51,256,196	1,653,426
Aug-20	15,891,021	19,994,146	5,733,972	8,231,966	1,295,659	51,146,764	1,649,896
Sep-20	14,378,542	18,140,639	5,418,210	8,546,145	1,336,629	47,820,165	1,594,006
Oct-20	15,348,392	19,362,368	5,701,588	4,960,669	4,571,663	49,944,680	1,611,119
PTD	240,167,447	294,338,832	79,103,308	74,394,523	48,013,771	736,017,881	1,853,949

Note: October '20 Crude Production comprises Crude only of 38,442,934 barrels (1.30 mbd), Pure Condensate of 7,004,682 barrels & Spiked Condensate of 2,547,108 barrels.

Total Monthly Crude Oil & Condensate Production (Million Barrels)



National Gas Production

PERIOD	JV	PSC	NPDC	TOTAL
	mmscfd	mmscfd	mmscfd	mmscfd
Nov-19	5,423.06	1,553.27	645.35	7,621.68
Dec-19	5,397.90	1,621.80	699.29	7,718.99
Jan-20	5,680.18	1,768.26	715.79	8,164.23
Feb-20	5,890.92	1,756.60	688.40	8,335.92
Mar-20	5,397.33	1,564.98	531.34	7,493.65
Apr-20	5,645.78	1,436.08	704.31	7,786.17
May-20	5,408.88	1,308.79	762.70	7,480.36
Jun-20	5,617.82	1,380.62	710.94	7,709.38
Jul-20	5,495.21	1,406.78	721.99	7,623.98
Aug-20	4,452.90	1,511.63	1,675.46	7,639.99
Sep-20	4,430.20	1,399.11	1,631.49	7,460.80
Oct-20	3,796.28	1,434.45	1,677.61	6,908.34
Nov-20	4,305.54	1,477.98	1,628.00	7,411.52
Average	5,149.38	1,509.26	984.05	7,642.69

National Gas Production (mmscfd)

